

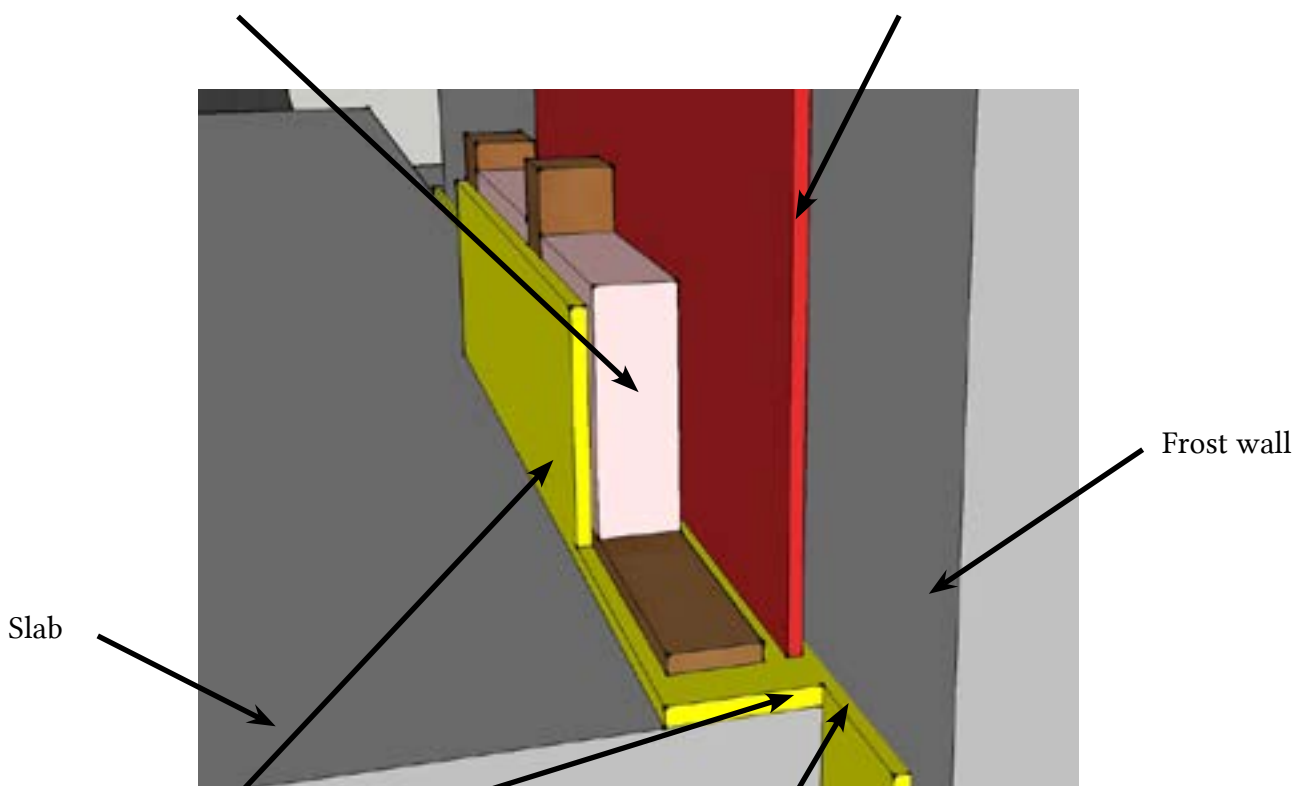


Below-ground basement wall fibreglass insulation details

Fibreglass shown here.
R17 effective required¹,
which usually means 2x6
studs.

Wood studs cannot directly contact the frost wall².

Fibreglass insulation **MUST** be isolated from parts
of the frost wall below ground. A permeable mem-
brane, such as housewrap is required. (Vapour barrier
is **NOT** permitted.)³



Vapour barrier must
enclose the slab, and
ultimately be sealed to
wall vapour barrier⁴.



Slab concrete *cannot* directly
contact frost wall material.
The slab and the frost wall
**must be separated with a bond
break**. Vapour barrier will perform
this function, as will foam⁵.

Code (2015) references: [1] Table 9.36.2.8-A or 9.36.2.8-B. [2] 9.13.2.5(1)(b) [3] 9.13.2.5(2)

[4] 9.25.3.1(1)(b) XPS foam ok as air barrier, as long as vapour barrier sealed to it or overlapped [5] 9.16.4.4